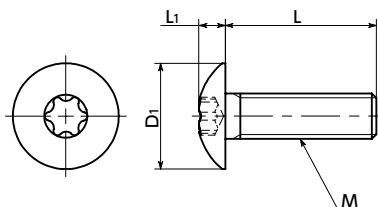




SNMX-TZB Hexalobular Socket Truss Head Screws



Material/Finish



| | SNMX-TZB |
|----------------|---------------------------------------|
| Main Body | Steel Trivalent Chromate Treatment |
| Strength Class | 4.8 Equivalent |

Application

Prevention of damage to screw heads
Reliable tightening



- Hexalobular socket shapes*1 are designed to withstand high tightening torque compared to cross-recesses.
- Recesses are unlikely to be damaged due to tightening, allowing safe and secure tightening to be performed.

*1: The hexalobular shape is prescribed by JIS B 1015: 2008(ISO 10664: 2005)"Hexalobular internal driving feature for bolts and screws".

Unit : mm

| Part Number ◀1 | M (Coarse) | | L ◀2 | | | | | | | | D1 | L1 | Hexalobular Socket No. | Mass (g) | Qty per Pack |
|----------------|-------------------|-------|------|---|----|----|----|----|----|----|------|-----|------------------------|-------------|--------------|
| | Nominal of Thread | Pitch | 6 | 8 | 10 | 12 | 16 | 20 | 25 | 30 | | | | | |
| SNMX-M3-TZB | M3 | 0.5 | 6 | 8 | 10 | | | | | | 6.9 | 1.9 | 10 | 0.63 - 0.79 | 20 |
| SNMX-M4-TZB | M4 | 0.7 | 6 | 8 | 10 | 12 | 16 | 20 | 25 | 30 | 9.4 | 2.5 | 20 | 1.4 - 3.1 | 20 |
| SNMX-M5-TZB | M5 | 0.8 | | | 10 | 12 | 16 | 20 | 25 | 30 | 11.8 | 3.1 | 25 | 2.8 - 5.5 | 20 |
| SNMX-M6-TZB | M6 | 1 | | | 10 | 12 | 16 | | | | 14 | 3.7 | 30 | 4.6 - 5.6 | 20 |

- When purchasing less volume than one full bag, a separate handling fee is charged. For details, see the Sold Separately Service.

Related Products

SKX Hexalobular Wrench



SKX-N Hexalobular Wrench for Extremely Limited Access Spaces



SKXB Hexalobular Short Bit



SRD Magnet Screwdriver



Part Number Specification

SNMX-M5-20-TZB

◀1 ▶2 ▶1

| | | | | |
|---------------------------|----------------------------|--------------------------|--------------------------|--------------------------------------|
| 1 Individual Sales | Cleanroom Wash & Packaging | Screw Length Adjustment | Vibration Resistant | Modification process for captive use |
| Available / Add'l charge | Available / Add'l charge | Available / Add'l charge | Available / Add'l charge | Not Available |