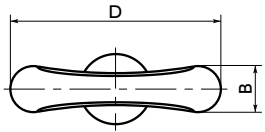
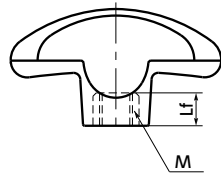
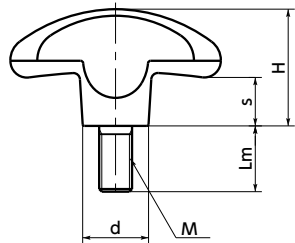
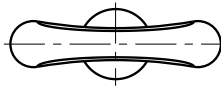


SUS Stainless steel

KUWM
KUWMS



KUWF
KUWFS



- Designed in consideration of the seven principles of universal design. A shape for easy application of forces and operations.
- About Universal Design → P.xxxx
- A rich variety of thread sizes from M4 to M10 are available.
- Five-color variations support the color universal design of machines / devices. Two-tone color of dark gray and various colors.
- Types and thread part materials can be selected by a product code.

Product Code	Type	Thread Part Material
KUWM	Male Screw	Made of Steel
KUWMS	Male Screw	Made of Stainless Steel
KUWF	Female Screw	Made of Steel
KUWFS	Female Screw	Made of Stainless Steel

- Knob colors can be selected by the end symbol of the part number.

End Symbol	Knob Color
BK	Matte black
SG	Matte silver
OR	Matte orange
BL	Matte blue
YW	Matte yellow

- Material/Finish

	KUWM	KUWMS	KUWF	KUWFS
knob	Nylon 6 (Various Color)	Nylon 6 (Various Color)	Nylon 6 (Various Color)	Nylon 6 (Various Color)
Thread Part	SWCH10R Trivalent Chromate Treatment	SUS303	Made of Steel Trivalent Chromate Treatment	SUS303

RoHS

Dimensions

KUWM KUWMS Male Screw

Part Number Steel	Part Number Stainless steel	D	M (Coarse) Nominal of Thread	Pitch	H	s	B	d	Mass (g)
KUWM-32-M4	KUWMS-32-M4	32	M4	0.7	19	8.4	7	10	10 - 11
KUWM-32-M5	KUWMS-32-M5	32	M5	0.8	19	8.4	7	10	12 - 14
KUWM-40-M6	KUWMS-40-M6	40	M6	1	23	10	8.75	13	15 - 18
KUWM-50-M8	KUWMS-50-M8	50	M8	1.25	27.8	11.4	11	16	32 - 38
KUWM-64-M8	KUWMS-64-M8	64	M8	1.25	35.5	14.8	14	21	43 - 49
KUWM-64-M10	KUWMS-64-M10	64	M10	1.5	35.5	14.8	14	21	60 - 70

Unit : mm

KUWF KUWFS Female Screw

Part Number Steel	Part Number Stainless steel	D	M (Coarse) Nominal of Thread	Pitch	Lf	H	s	B	d	Mass (g)
KUWF-32-M4	KUWFS-32-M4	32	M4	0.7	5	19	8.4	7	10	9
KUWF-32-M5	KUWFS-32-M5	32	M5	0.8	5	19	8.4	7	10	9
KUWF-40-M6	KUWFS-40-M6	40	M6	1	6	23	10	8.75	13	10
KUWF-50-M8	KUWFS-50-M8	50	M8	1.25	7	27.8	11.4	11	16	22
KUWF-64-M8	KUWFS-64-M8	64	M8	1.25	9	35.5	14.8	14	21	33
KUWF-64-M10	KUWFS-64-M10	64	M10	1.5	9	35.5	14.8	14	21	42

Unit : mm

Cleanroom Wash & Packaging → P.xxxx Screw Combination → P.xxxx Screw Length Adjustment → P.xxxx Vibration Resistant → P.xxxx Laser Marking → P.xxxx
 Not Available Female screw only/ Add'l charge Male screw only/ Add'l charge Male screw only/ Add'l charge Available / Add'l charge



KUWM Made of Steel KUWMS Stainless Steel

Part Number Male screw	Lm (mm)				
	10	16	20	30	40
KUWM-32-M4	●	●	●		
KUWM-32-M5		●	●	●	
KUWM-40-M6			●	●	●
KUWM-50-M8			●	●	●
KUWM-64-M8			●	●	●
KUWM-64-M10			●	●	●
KUWMS-32-M4	●	●	●		
KUWMS-32-M5		●	●	●	
KUWMS-40-M6			●	●	●
KUWMS-50-M8			●	●	●
KUWMS-64-M8			●	●	●
KUWMS-64-M10			●	●	●

⚠ Precautions for Use

In order to avoid damage and faults, the length of the screws used when mounting KUWF KUWFS must be less than the Lf listed the dimension table.

- Part number specification

KUWMS-32-M4-10-BK

1 2 3 4 5

For male screw type, select 4 screw length Lm from the sizes marked with ● in the table.