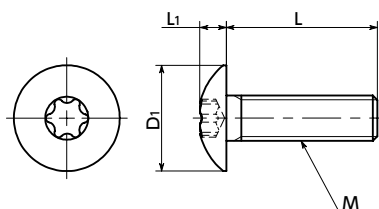




# SNMXS Hexalobular Socket Truss Head Screws

**SUS** Stainless steel



## Material/Finish



|          |                               |
|----------|-------------------------------|
|          | <b>SNMXS</b>                  |
| Material | SUSXM7 (Equivalent to SUS304) |

## Application

Prevention of damage to screw heads  
Reliable tightening

- Hexalobular socket shapes\*1 are designed to withstand high tightening torque compared to cross-recesses.
- Recesses are unlikely to be damaged due to tightening, allowing safe and secure tightening to be performed.

\*1 : The hexalobular shape is prescribed by JIS B 1015: 2008(ISO 10664: 2005)"Hexalobular internal driving feature for bolts and screws".

Unit : mm

| Part Number     | M (Coarse)        |       | L |   |    |    |    |    |    |    | D1   | L1  | Hexalobular Socket No. | Mass (g)    | Qty per Pack |
|-----------------|-------------------|-------|---|---|----|----|----|----|----|----|------|-----|------------------------|-------------|--------------|
|                 | Nominal of Thread | Pitch | 6 | 8 | 10 | 12 | 16 | 20 | 25 | 30 |      |     |                        |             |              |
| <b>SNMXS-M3</b> | M3                | 0.5   | 6 | 8 | 10 | 12 |    |    |    |    | 6.9  | 1.9 | 10                     | 0.58 - 0.82 | 20           |
| <b>SNMXS-M4</b> | M4                | 0.7   | 6 | 8 | 10 | 12 | 16 | 20 |    |    | 9.4  | 2.5 | 20                     | 1.4 - 2.5   | 20           |
| <b>SNMXS-M5</b> | M5                | 0.8   |   | 8 | 10 | 12 | 16 | 20 |    |    | 11.8 | 3.1 | 25                     | 2.9 - 4.3   | 20           |
| <b>SNMXS-M6</b> | M6                | 1     |   |   | 10 | 12 | 16 | 20 | 25 | 30 | 14   | 3.7 | 30                     | 5.2 - 8.7   | 20           |
| <b>SNMXS-M8</b> | M8                | 1.25  |   |   |    |    | 16 | 20 | 25 | 30 | 17.8 | 4.8 | 40                     | 13 - 17     | 20           |

- When purchasing less volume than one full bag, a separate handling fee is charged. For details, see the Sold Separately Service.

## Related Products

**SKX** Hexalobular Wrench



**SKX-N** Hexalobular Wrench for Extremely Limited Access Spaces



**SKXB** Hexalobular Short Bit



**SRD** Magnet Screwdriver



## Part Number Specification

**SNMXS-M5-20**



|                          |                            |                          |                          |                                      |
|--------------------------|----------------------------|--------------------------|--------------------------|--------------------------------------|
| Individual Sales         | Cleanroom Wash & Packaging | Screw Length Adjustment  | Vibration Resistant      | Modification process for captive use |
| Available / Add'l charge | Available / Add'l charge   | Available / Add'l charge | Available / Add'l charge | Available / Add'l charge             |