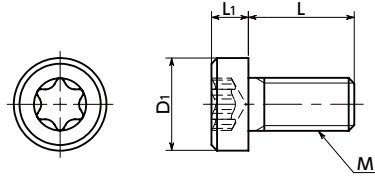


# SPS-LH Plastic Screws - Hexalobular Socket Head Cap Screw with Low Profile - PPS

Protrusion 
 Heat-resistance 
 Chemical-proof 
 High Specific Strength



● Material/Finish



SPS-LH	
Main Body	PPS (Polyphenylene Sulfide) (Bright Light Brown) (Glass Fiber 40%)
Heat Resistance Temperature*1	200°C

\*1: This is the value for the resin material. The operating temperature of the product changes with performance conditions such as tightening torque.

● Application

FPD production equipment / Semiconductor devices / Printed circuit board etching devices / Metallic surface treatment equipment and facilities / Chemical plants / Transformers / Electrical and electronic equipment / Hot water pumps / Chemical pumps

- PPS low profile cap screw.
- PPS has excellent heat resistance and chemical resistance plus continuous use at 200°C. There are no fats or organic solvents capable of attacking PPS below 200°C.
- Retains high strength, rigidity and heat resistance.
- It also has high flame retardance which clears the UL 94 V-0 standard.
- The recess has a hexalobular\*1 shape that can withstand high tightening torque.
- Install and remove with **SKX** Dedicated Wrench or **SKXB** Dedicated Bit and **SRD** Dedicated Magnetic Screwdriver together.
- Use the **SKX-N** hexalobular wrench for extremely limited access spaces for mounting and removing in tight spaces.
- For the properties and precautions of plastic screws, please refer to "Properties of Plastic Screws".

\*1: The hexalobular shape is prescribed by JIS B 1015: 2008(ISO 10664: 2005)"Hexalobular internal driving feature for bolts and screws".

Part Number	M (Coarse)		L								D1	L1	Applicable Wrench	Hexalobular Socket No.	Tension Rupture Load*1 (N)	Torsional Torque*1 (N·m)	Mass (g)	per Pack Qty	
	Nominal of Thread	Pitch	6	8	10	12	16	20	25	30									40
<b>SPS-M3-LH</b>	M3	0.5	6	8	10	12	16	20			5.5	2.4	SKX-10	10	566	0.28	0.14 - 0.26	10	
<b>SPS-M4-LH</b>	M4	0.7	6	8	10	12	16	20	25		7	3.1	SKX-20	20	918	0.71	0.25 - 0.54	10	
<b>SPS-M5-LH</b>	M5	0.8	8	10	12	16	20	25	30		8.5	3.65	SKX-25	25	1584	1.4	0.49 - 1.04	10	
<b>SPS-M6-LH</b>	M6	1			10	12	16	20	25	30	40	10	4.4	SKX-30	30	2011	1.86	0.81 - 1.9	10

Unit: mm

\*1: Values in chart are for reference only. They are not guaranteed values. The recommended tightening torque is 50% of the torsional torque.

● When purchasing less volume than one full bag, a separate handling fee is charged. For details, see the Sold Separately Service.

● Related Products

PPS hex nuts and washers **SPS-N** **SPS-W** are available.



**SKX** Hexalobular Wrench



**SKX-N** Hexalobular Wrench for Extremely Limited Access Spaces



**SKXB** Hexalobular Short Bit



**SRD** Magnet Screwdriver



● Part number specification

**SPS - M5 - 30 - LH**

Product Symbol **1** **2** Product Symbol

Individual Sales	Cleanroom Wash & Packaging	Screw Length Adjustment	Vibration Resistant	Modification process for captive use
Available / Add'l charge	Available / Add'l charge	Available / Add'l charge	Not Available	Available / Add'l charge