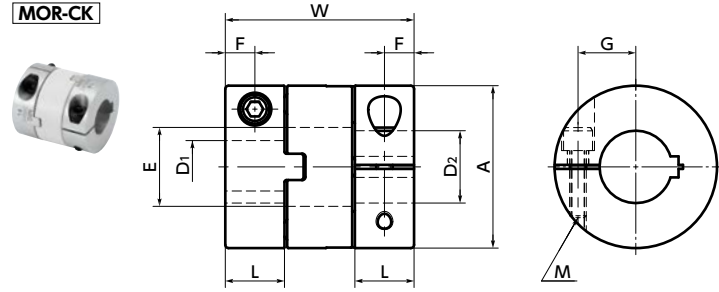


MOR-CK Flexible Coupling - Oldham - type - Clamping + Key type

- High torque
- Electrical Insulation
- High Allowable Misalignment
- Small Eccentric Reaction Force

MOR-CK



Dimensions

Unit : mm

Part Number	A	L	W	E	F	G	M	Screw Tightening Torque (N·m)
MOR-15CK	15	7	21.2	8.2	3.5	5	M2.5	1
MOR-17CK	17	7.3	24.5	8.2	3.7	6	M2.5	1
MOR-20CK	20	8.8	27.6	12.2	4.4	7.5	M3	1.5
MOR-26CK	26	9.7	30.4	14.2	4.9	9.5	M3	1.5
MOR-30CK	30	10	32.6	16.2	5	11.1	M4	2.5
MOR-34CK	34	11.1	34	16.2	5.6	12.6	M4	2.5
MOR-38CK	38	12.1	40.1	20.3	6	14.2	M5	4
MOR-45CK	45	13.8	46	22.3	6.9	16	M5	4
MOR-55CK	55	18.7	57	26.5	9.4	20	M6	8
MOR-68CK	68	24	77	38.5	12	26	M8	16

Unit : mm

Part Number	Standard Metric Bore Diameter													
	D1 · D2													
	6	8	10	12	14	15	16	18	20	22	25	28	30	35
MOR-15CK	●													
MOR-17CK	●													
MOR-20CK	●	●	●											
MOR-26CK	●	●	●	●	●									
MOR-30CK		●	●	●	●									
MOR-34CK			●	●	●	●								
MOR-38CK			●	●	●	●	●							
MOR-45CK				●	●	●	●	●						
MOR-55CK						●	●	●	●					
MOR-68CK									●	●	●	●	●	●

Unit : inch

Part Number	Standard Inch Bore Diameter			
	D1 · D2			
	1 / 2	5 / 8	3 / 4	7 / 8
MOR-26CK	●			
MOR-30CK	●			
MOR-34CK	●	●		
MOR-38CK	●	●	●	
MOR-45CK	●	●	●	
MOR-55CK		●	●	●

- All products are provided with hex socket head cap screw.
- Recommended tolerance for shaft diameters is h6 and h7.
- A set of hubs with clamping + key type for one side and clamping type for the other side is available upon request.
- For the shaft insertion amount to the coupling, see Mounting/maintenance.

⚠ Precautions for Use

- In case of mounting on D-cut shaft, be careful about the position of the D-cut surface of the shaft. → P.xxxx
- There are sizes where the hex socket head bolt exceeds the outer diameter of the coupling and the rotating diameter is larger than the outer diameter. Please be careful of the interference of coupling. → P.xxxx

- Part number specification

MOR-38CK - 14-15 1 Set

MOR-38 - SPCR Single Spacer

Product Code: MOR-38
 Outside Diameter (A Dimension): SPCR
 Single Spacer

Additional Keyway at Shaft Hole → P.xxxx Cleanroom Wash & Packaging → P.xxxx Change to Stainless Steel Screw → P.xxxx
 Please feel free to contact us Please feel free to contact us Available / Add'l charge

MOR-CK Flexible Coupling - Oldham - type - Clamping + Key type

 High torque
  Electrical Insulation
  High Allowable Misalignment
  Small Eccentric Reaction Force

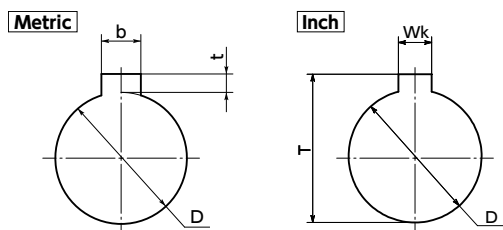
Performance

Part Number	Max. Bore Diameter (mm)	Rated Torque *1 (N·m)	Maximum Torque *1 (N·m)	Max. Rotational Frequency (min ⁻¹)	Moment *2 of Inertia (kg·m ²)	Static Torsional Stiffness (N·m/rad)	Max. Lateral Misalignment (mm)	Max. Angular Misalignment (°)	Mass *2 (g)
MOR-15CK	6	1.6	3.2	42000	1.8×10 ⁻⁷	80	1	3	5
MOR-17CK	6.35	2.2	4.4	37000	3.8×10 ⁻⁷	120	1.2	3	9
MOR-20CK	10	3.2	6.4	31000	8.0×10 ⁻⁷	120	1.2	3	13
MOR-26CK	14	6	12	24000	2.5×10 ⁻⁶	300	1.5	3	23
MOR-30CK	14	15	30	21000	5.2×10 ⁻⁶	530	2	3	38
MOR-34CK	16	16	32	18000	8.6×10 ⁻⁶	1000	2.5	3	49
MOR-38CK	20	28	56	16000	1.5×10 ⁻⁵	1500	2.5	3	64
MOR-45CK	20	30	60	14000	3.2×10 ⁻⁵	2400	3	3	110
MOR-55CK	25	45	90	11000	1.0×10 ⁻⁴	4100	4	3	230
MOR-68CK	35	80	160	9000	3.3×10 ⁻⁴	6400	4.5	3	440

*1: Values with no load fluctuation and rotation in a single direction. If there is large load fluctuation, or both normal and reverse rotation, select a size with some margin. If ambient temperature exceeds 30°C, be sure to correct the rated torque and max. torque with temperature correction factor shown in the following table. The allowable operating temperature of **MOR-CK** is -20°C to 80°C.

*2: These are values with max. bore diameter.

• Details of Shaft Hole



Metric Shaft Hole

Unit : mm

Standard Bore Diameter D	Keyway		Key	
	b	t	Nominal Dimension b x h	Key
	Standard Dimension	Allowance (JS9)	Standard Dimension	Allowance
6	2	±0.0125	1.0	+0.1 0
8	3	±0.0125	1.4	+0.1 0
10·12	4	±0.0150	1.8	+0.1 0
14·15·16	5	±0.0150	2.3	+0.1 0
18·20·22	6	±0.0150	2.8	+0.1 0
25·28·30	8	±0.0180	3.3	+0.2 0
35	10	±0.0180	3.3	+0.2 0

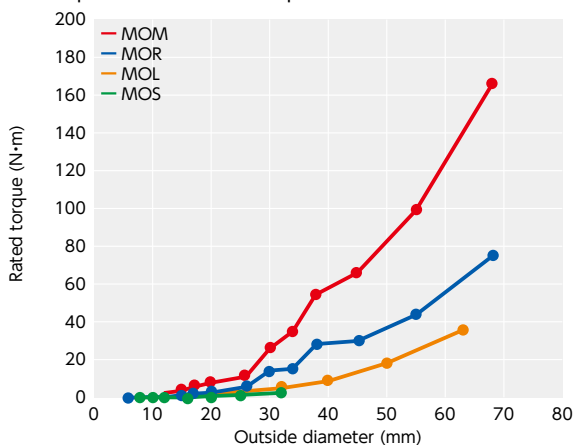
• Excerpt from JIS B 1301

Inch Shaft Hole

Unit : inch

Standard Inch Bore Diameter D	Keyway		Key	
	Wk	T	Nominal Dimension b x h	Key
	Standard Dimension	Allowance	Standard Dimension	Allowance
1 / 2	1 / 8	+0.002 0	0.560	+0.01 0
5 / 8	3 / 16	+0.002 0	0.709	+0.01 0
3 / 4	3 / 16	+0.002 0	0.837	+0.01 0
7 / 8	3 / 16	+0.002 0	0.964	+0.01 0

• Comparison of rated torque



• Ambient Temperature / Temperature Correction Factor

Ambient Temperature	Temperature Correction Factor
-20°C to 30°C	1.00
30°C to 40°C	0.80
40°C to 60°C	0.70
60°C to 80°C	0.55