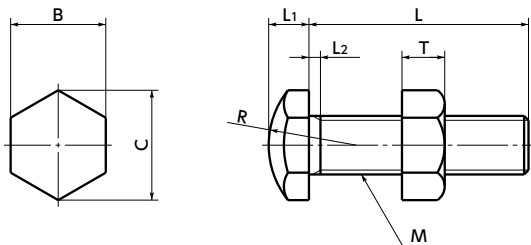


# SSB-B / SSBS-B Stopper Bolts - Head Sphere Type



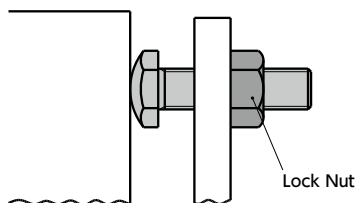
SUS Stainless steel



SSB-B

SSBS-B

- Usage example  
Use the lock nut on an opposite side of the side that receives the force.



- Hexagon head is round.
- Round part has already been quenched. It is highly abrasion-resistant.
- All products are provided with lock nut.

## Material/Finish



	SSB-B Made of Steel	SSBS-B Made of Stainless Steel
Thread Part	Equivalent to S45C Sphere Part Quenching (Hardness: 45 HRC or Above) Ferroferric Oxide Film (Black)	SUS410 Nitriding Treatment (Hardness: 40 HRC or Higher)
Lock Nut	SS400 Trivalent Chromate Treatment	SUS304

## Dimensions

Unit : mm

Part Number Steel	Part Number Stainless steel	M (Coarse) Nominal of Thread <span style="color:red">◀1</span>	Pitch	L <sub>2</sub>	T	R	L <sub>1</sub>	B	C	Mass (g)
SSB-M3-B		M3	0.5	1.5	2.4	6	2	5.5	6.4	1 - 2
SSB-M4-B		M4	0.7	2.1	3.2	8	2.8	7	8.1	2.3 - 5.2
SSB-M5-B		M5	0.8	2.4	4	8	3.5	8	9.2	3.7 - 9.7
SSB-M6-B	SSBS-M6-B	M6	1	3	5	10	4	10	11.5	7.2 - 15
SSB-M8-B	SSBS-M8-B	M8	1.25	3.7	6.5	12	5.5	13	15	15 - 40
SSB-M10-B		M10	1.5	4.5	8	16	7	17	19.6	38 - 63
SSB-M12-B		M12	1.75	5.2	10	20	8	19	21.9	54 - 99
SSB-M16-B		M16	2	6	13	25	10	24	27.7	108 - 155

SSB-B Made of Steel    SSBS-B Made of Stainless Steel

Part Number	L (mm) <span style="color:red">◀2</span>											
	10	15	20	25	30	35	40	50	60	70	80	
SSB-M3-B	●	●	●	●	●							
SSB-M4-B	●	●	●	●	●	●	●					
SSB-M5-B	●	●	●	●	●	●	●	●				
SSB-M6-B		●	●	●	●	●	●	●				
SSB-M8-B		●	●	●	●	●	●	●	●	●		
SSB-M10-B					●	●	●	●	●	●	●	
SSB-M12-B					●	●	●	●	●	●	●	●
SSB-M16-B								●	●	●	●	●
SSBS-M6-B					●		●	●				
SSBS-M8-B					●		●	●				

## Related Products

The stop pin with excellent abrasion resistance **SPM** is available for the stopper bolt recipient.



- Part number specification

## SSB-M10-30-B

Product Code ◀1 ◀2 Head Sphere Type

Cleanroom Wash & Packaging Please feel free to contact us	Screw Combination Not Available	Screw Length Adjustment Available / Add'l charge	Vibration Resistant Available / Add'l charge
--	------------------------------------	---	---