

- For rod end shaft bearing height adjustment, etc.
- Right thread or left thread can be selected according to the end symbol of the part number.

SHS-R — Right thread

SHS-L — Left thread

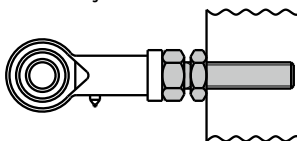
- All products are provided with hexagon nuts (3 types).
- Material/Finish

SHS	
Main body	S45C (hardness: 35 - 40 HRC) Ferrosferric Oxide Film (Black)
Nut	SS400 Ferrosferric Oxide Film (Black)

SHS-R Right thread **SHS-L** Left thread

Part Number	M (Coarse)		L ₁	E ₁	E	H	H ₁	L	B	Mass (g)
	Nominal of Thread	Pitch								
SHS-M4-R	M4	0.7	16.5	18	8	3.2	2.4	29.2	7	4
SHS-M6-R	M6	1	23.5	25	12	5	3.6	42	10	10
SHS-M8-R	M8	1.25	31	33	16	6.5	5	55.5	13	25
SHS-M10-R	M10	1.5	39	41	20	8	6	69	17	45
SHS-M12-R	M12	1.75	47	49	24	10	7	83	19	80
SHS-M16-R	M16	2	57	60	32	13	10	105	24	170
SHS-M4-L	M4	0.7	16.5	18	8	3.2	2.4	29.2	7	4
SHS-M6-L	M6	1	23.5	25	12	5	3.6	42	10	10
SHS-M8-L	M8	1.25	31	33	16	6.5	5	55.5	13	25
SHS-M10-L	M10	1.5	39	41	20	8	6	69	17	45
SHS-M12-L	M12	1.75	47	49	24	10	7	83	19	80
SHS-M16-L	M16	2	57	60	32	13	10	105	24	170

- Usage example
For adjustment of rod end shaft bearing.



- Part number specification

SHS-M10-R

Product Code

Cleanroom Wash & Packaging → P.0000	Screw Length Adjustment → P.0000	Vibration Resistant → P.0000	Laser Marking → P.0000
Not Available	Available / Add'l charge	Available / Add'l charge	Not Available