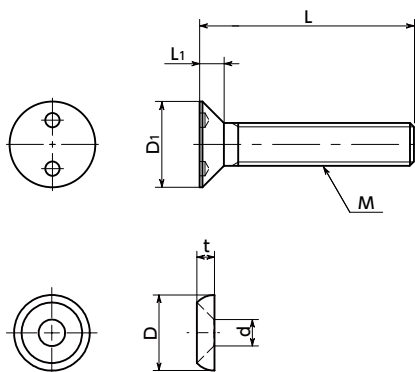


SRTFS-SET Two - Hole Flat Head Machine Screws and Rosette Washer Set



Tamper Resistance **SUS** Stainless steel



Material/Finish



	SRTFS-SET
Main Body	Equivalent to SUS304
Rosette Washer	SUS303
Strength Class	Equivalent to A2-50

- Set of two-hole flat head machine screws **SRTFS** and rosette washers **SWAS-RW**.
- Countersinking is not required.
- This prevents mounting and removing with regular tools. Also, since use as a set with rosette washers makes it difficult to grasp the screw directly with a tool and rotate it, theft prevention is improved.
- Install and remove with **SRTB** Dedicated Bits and **SRD** Dedicated Magnetic Screwdriver together.
- The simple head design is also suitable for decoration.

Application

Equipment/devices disassembly/tampering prevention
Theft prevention for outdoor facilities
Security measures
Safety measures

Unit : mm

Part Number	M (Coarse)		L										D ₁	L ₁	D	d	t	Bit Part No.	Screwdriver Part No.	Mass (g)	Qty per Pack
	Nominal of Thread	Pitch																			
SRTFS-M3-SET	M3	0.5	6	8	10	12	16		30			5.6	1.65	10	3.5	2	SRTB-4	SRD-6.35	0.35 - 1.34	10	
SRTFS-M4-SET	M4	0.7			10	12	16	20	25	35		7.5	2.2	12	4.5	2.5	SRTB-8	SRD-6.35	1.03 - 2.82	10	
SRTFS-M5-SET	M5	0.8				12	16	20	25	30	35		9.2	2.5	14	5.5	3	SRTB-10	SRD-6.35	1.88 - 4.58	10
SRTFS-M6-SET	M6	1.0				12	16	20	25	30	40	11	3	16	6.5	3.5	SRTB-14	SRD-6.35	2.9 - 8.01	10	

- When purchasing less volume than one full bag, a separate handling fee is charged. For details, see the Sold Separately Service.

Related Products

SRTB applicable bits are available.



Dedicated magnetic screwdrivers **SRD** are available.



Part Number Specification

SRTFS-M5-16-SET

1 2 1

Individual Sales	Cleanroom Wash & Packaging	Screw Length Adjustment	Vibration Resistant	Modification process for captive use
Available / Add'l charge	Available / Add'l charge	Available / Add'l charge	Available / Add'l charge	Not Available